

PW
PSW
0.5m_x

PRECISION GEARS

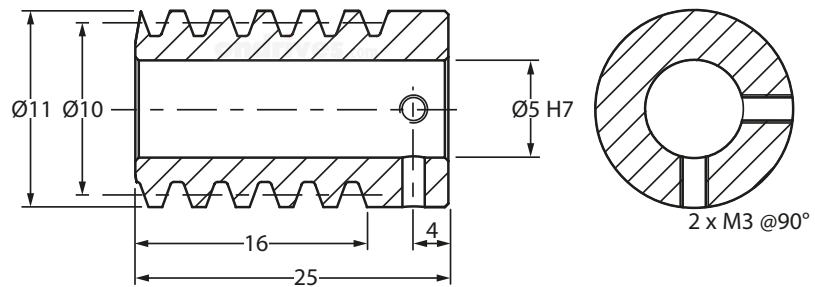
0.5 Module Worms α 20° PA

Quality Grade Worm 6e DIN 3974/58405



Z1 worm profile

PW Bore Worm

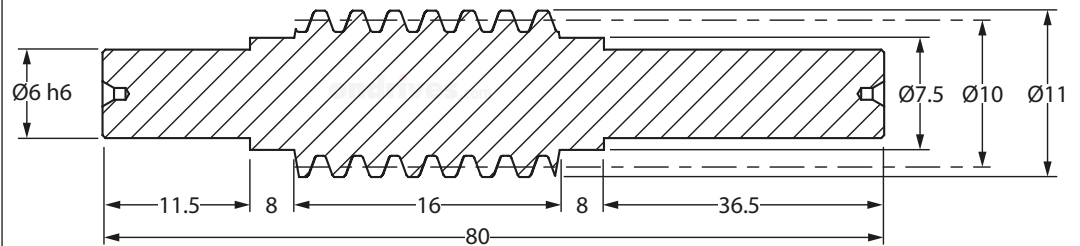


817M40T Steel		805M20 Steel Hard & Ground		303 Stainless Steel	
Part Number Bore Worm	No. of Starts Z_1	Part Number Bore Worm	No. of Starts Z_1	Part Number Bore Worm	No. of Starts Z_1
PW0.5-1	1	PW0.5-1HG	1	PW0.5-1S	1
PW0.5-2	2	PW0.5-2HG	2	PW0.5-2S	2
PW0.5-3	3	PW0.5-3HG	3	PW0.5-3S	3
PW0.5-4	4	PW0.5-4HG	4	PW0.5-4S	4



Z1 worm profile

PSW Shaft Worm



817M40T Steel		805M20 Steel Hard & Ground		303 Stainless Steel	
Part Number Shaft Worm	No. of Starts Z_1	Part Number Shaft Worm	No. of Starts Z_1	Part Number Shaft Worm	No. of Starts Z_1
PSW0.5-1	1	PSW0.5-1HG	1	PSW0.5-1S	1
PSW0.5-2	2	PSW0.5-2HG	2	PSW0.5-2S	2
PSW0.5-3	3	PSW0.5-3HG	3	PSW0.5-3S	3
PSW0.5-4	4	PSW0.5-4HG	4	PSW0.5-4S	4

PW
PSW
0.5m_x

PRECISION GEARS

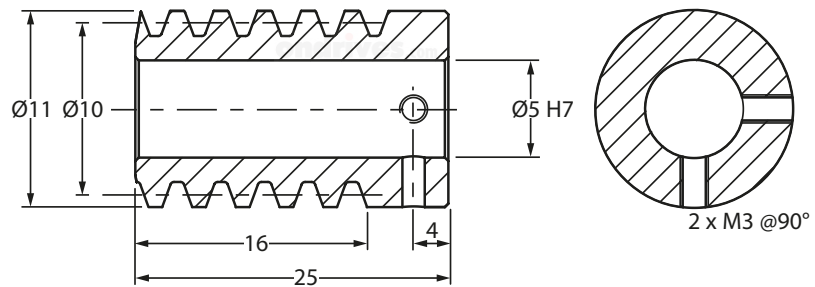
0.5 Module Plastic Worms α 20° PA

Quality Grade Worm 7e DIN 3974/58405



Z1 worm profile

PW Bore Worm

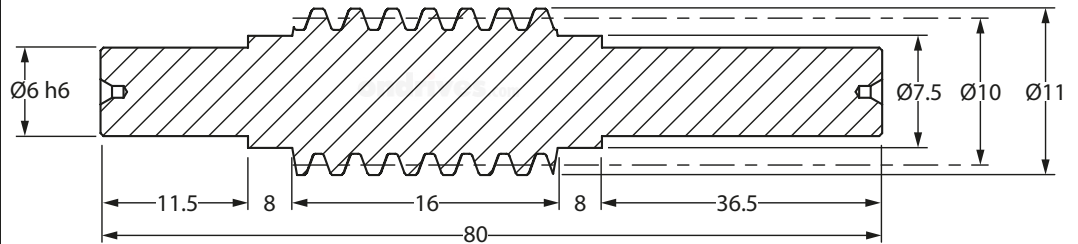


Delrin POM		PEEK GF30°	
Part Number Bore Worm	No. of Starts Z_1	Part Number Bore Worm	No. of Starts Z_1
PW0.5-1DL	1	PW0.5-1PK	1
PW0.5-2DL	2	PW0.5-2PK	2
PW0.5-3DL	3	PW0.5-3PK	3
PW0.5-4DL	4	PW0.5-4PK	4



Z1 worm profile

PSW Shaft Worm



Delrin POM		PEEK GF30°	
Part Number Shaft Worm	No. of Starts Z_1	Part Number Shaft Worm	No. of Starts Z_1
PSW0.5-1DL	1	PSW0.5-1PK	1
PSW0.5-2DL	2	PSW0.5-2PK	2
PSW0.5-3DL	3	PSW0.5-3PK	3
PSW0.5-4DL	4	PSW0.5-4PK	4

PW
PSW
1.0m_x

PRECISION GEARS

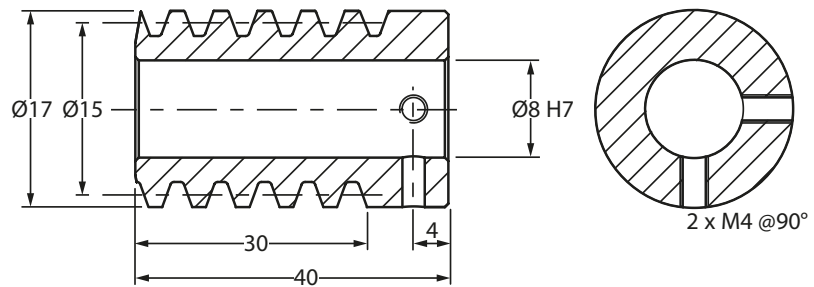
1.0 Module Worms α 20° PA

Quality Grade Worm 6e25 DIN 3974/3967



Z1 worm profile

PW Bore Worm

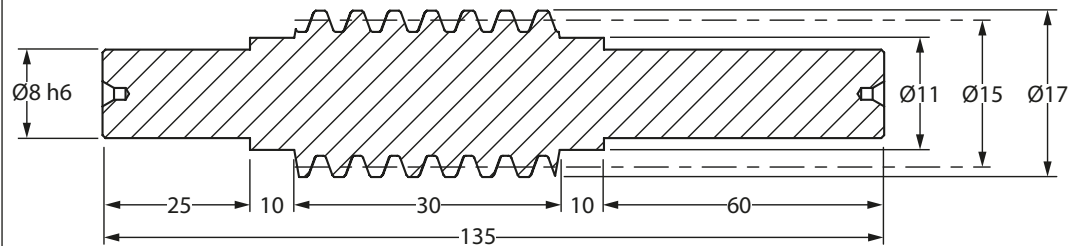


817M40T Steel		805M20 Steel Hard & Ground		303 Stainless Steel	
Part Number Bore Worm	No. of Starts Z_1	Part Number Bore Worm	No. of Starts Z_1	Part Number Bore Worm	No. of Starts Z_1
PW1.0-1	1	PW1.0-1HG	1	PW1.0-1S	1
PW1.0-2	2	PW1.0-2HG	2	PW1.0-2S	2
PW1.0-3	3	PW1.0-3HG	3	PW1.0-3S	3
PW1.0-4	4	PW1.0-4HG	4	PW1.0-4S	4



Z1 worm profile

PSW Shaft Worm



817M40T Steel		805M20 Steel Hard & Ground		303 Stainless Steel	
Part Number Shaft Worm	No. of Starts Z_1	Part Number Shaft Worm	No. of Starts Z_1	Part Number Shaft Worm	No. of Starts Z_1
PSW1.0-1	1	PSW1.0-1HG	1	PSW1.0-1S	1
PSW1.0-2	2	PSW1.0-2HG	2	PSW1.0-2S	2
PSW1.0-3	3	PSW1.0-3HG	3	PSW1.0-3S	3
PSW1.0-4	4	PSW1.0-4HG	4	PSW1.0-4S	4

PW
PSW
1.0m_x

PRECISION GEARS

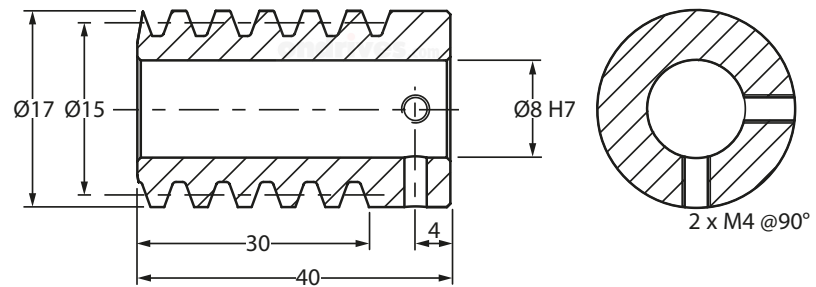
1.0 Module Plastic Worms α 20° PA

Quality Grade Worm 7e25 DIN 3974/3967

PW Bore Worm



Z1 worm profile

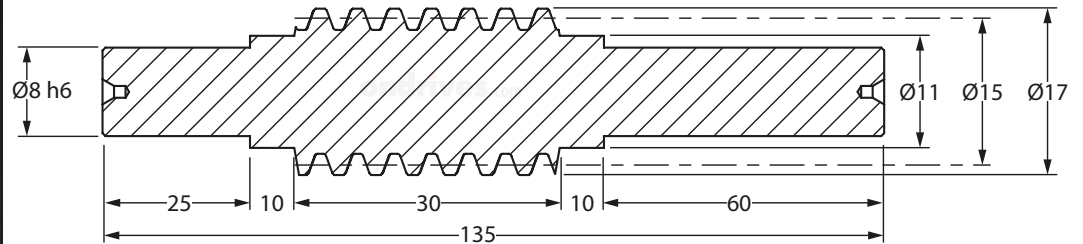


Delrin POM		PEEK GF30°	
Part Number Bore Worm	No. of Starts Z_1	Part Number Bore Worm	No. of Starts Z_1
PW1.0-1DL	1	PW1.0-1PK	1
PW1.0-2DL	2	PW1.0-2PK	2
PW1.0-3DL	3	PW1.0-3PK	3
PW1.0-4DL	4	PW1.0-4PK	4



Z1 worm profile

PSW Shaft Worm



Delrin POM		PEEK GF30°	
Part Number Shaft Worm	No. of Starts Z_1	Part Number Shaft Worm	No. of Starts Z_1
PSW1.0-1DL	1	PSW1.0-1PK	1
PSW1.0-2DL	2	PSW1.0-2PK	2
PSW1.0-3DL	3	PSW1.0-3PK	3
PSW1.0-4DL	4	PSW1.0-4PK	4

PW
PSW
1.5m_x

PRECISION GEARS

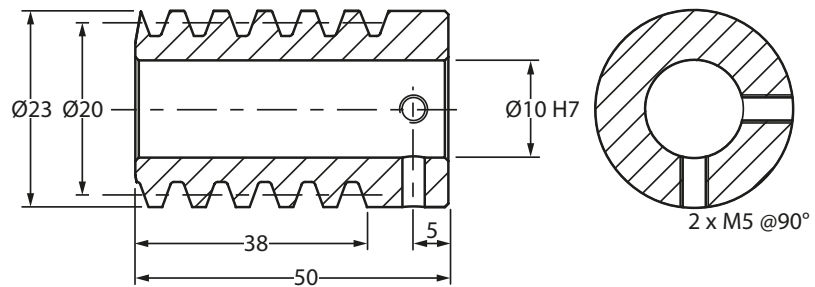
1.5 Module Worms α 20° PA

Quality Grade Worm 6e25 DIN 3974/3967



Z1 worm profile

PW Bore Worm

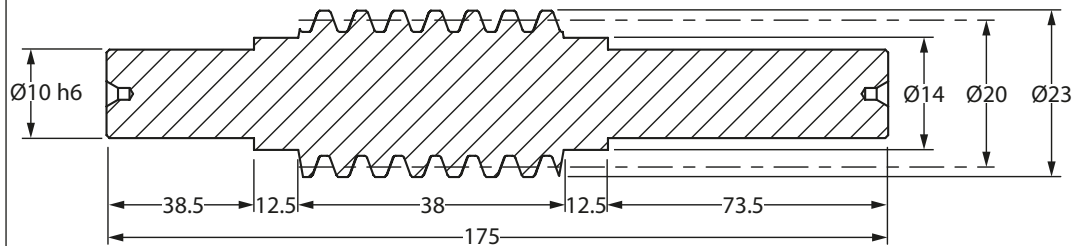


817M40T Steel		805M20 Steel Hard & Ground		303 Stainless Steel	
Part Number Bore Worm	No. of Starts Z_1	Part Number Bore Worm	No. of Starts Z_1	Part Number Bore Worm	No. of Starts Z_1
PW1.5-1	1	PW1.5-1HG	1	PW1.5-1S	1
PW1.5-2	2	PW1.5-2HG	2	PW1.5-2S	2
PW1.5-3	3	PW1.5-3HG	3	PW1.5-3S	3
PW1.5-4	4	PW1.5-4HG	4	PW1.5-4S	4



Z1 worm profile

PSW Shaft Worm



817M40T Steel		805M20 Steel Hard & Ground		303 Stainless Steel	
Part Number Shaft Worm	No. of Starts Z_1	Part Number Shaft Worm	No. of Starts Z_1	Part Number Shaft Worm	No. of Starts Z_1
PSW1.5-1	1	PSW1.5-1HG	1	PSW1.5-1S	1
PSW1.5-2	2	PSW1.5-2HG	2	PSW1.5-2S	2
PSW1.5-3	3	PSW1.5-3HG	3	PSW1.5-3S	3
PSW1.5-4	4	PSW1.5-4HG	4	PSW1.5-4S	4

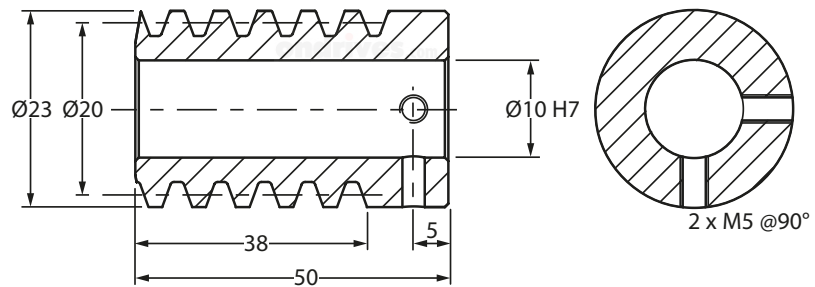
PW
PSW
1.5m_x

PRECISION GEARS

1.5 Module Plastic Worms α 20° PA

Quality Grade Worm 7e25 DIN 3974/3967

PW Bore Worm

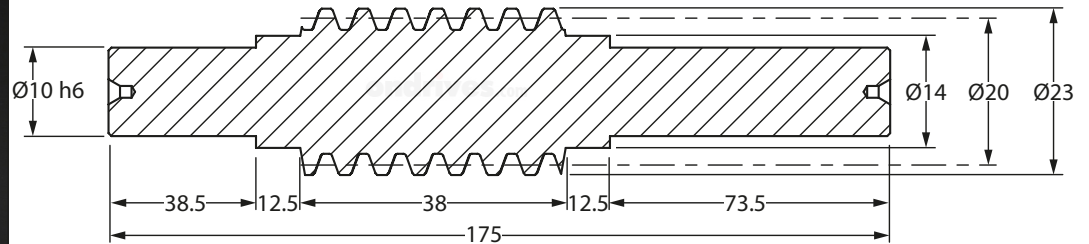


Z1 worm profile

Delrin POM		PEEK GF30°	
Part Number Bore Worm	No. of Starts Z_1	Part Number Bore Worm	No. of Starts Z_1
PW1.5-1DL	1	PW1.5-1PK	1
PW1.5-2DL	2	PW1.5-2PK	2
PW1.5-3DL	3	PW1.5-3PK	3
PW1.5-4DL	4	PW1.5-4PK	4



PSW Shaft Worm



Z1 worm profile

Delrin POM		PEEK GF30°	
Part Number Shaft Worm	No. of Starts Z_1	Part Number Shaft Worm	No. of Starts Z_1
PSW1.5-1DL	1	PSW1.5-1PK	1
PSW1.5-2DL	2	PSW1.5-2PK	2
PSW1.5-3DL	3	PSW1.5-3PK	3
PSW1.5-4DL	4	PSW1.5-4PK	4

PW
PSW
2.0m_x

PRECISION GEARS

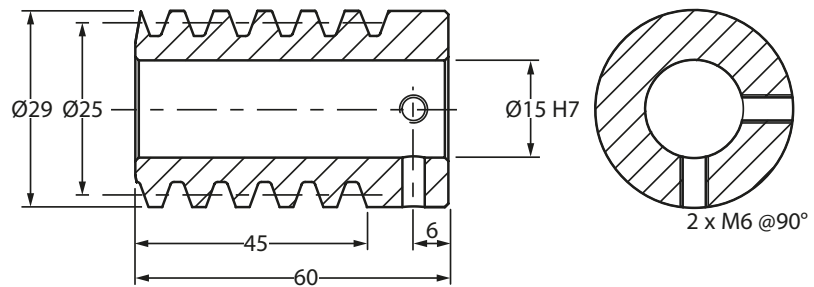
2.0 Module Worms α 20° PA

Quality Grade Worm 6e25 DIN 3974/3967



Z1 worm profile

PW Bore Worm

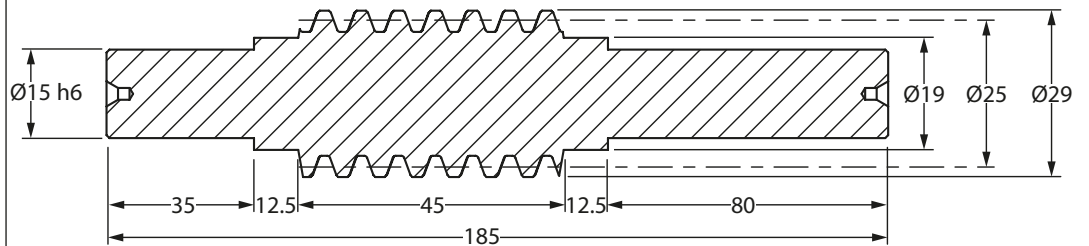


817M40T Steel		805M20 Steel Hard & Ground		303 Stainless Steel	
Part Number	No. of Starts	Part Number	No. of Starts	Part Number	No. of Starts
Bore Worm	Z ₁	Bore Worm	Z ₁	Bore Worm	Z ₁
PW2.0-1	1	PW2.0-1HG	1	PW2.0-1S	1
PW2.0-2	2	PW2.0-2HG	2	PW2.0-2S	2
PW2.0-3	3	PW2.0-3HG	3	PW2.0-3S	3
PW2.0-4	4	PW2.0-4HG	4	PW2.0-4S	4



Z1 worm profile

PSW Shaft Worm



817M40T Steel		805M20 Steel Hard & Ground		303 Stainless Steel	
Part Number	No. of Starts	Part Number	No. of Starts	Part Number	No. of Starts
Shaft Worm	Z ₁	Shaft Worm	Z ₁	Shaft Worm	Z ₁
PSW2.0-1	1	PSW2.0-1HG	1	PSW2.0-1S	1
PSW2.0-2	2	PSW2.0-2HG	2	PSW2.0-2S	2
PSW2.0-3	3	PSW2.0-3HG	3	PSW2.0-3S	3
PSW2.0-4	4	PSW2.0-4HG	4	PSW2.0-4S	4

PW
PSW
2.0m_x

PRECISION GEARS

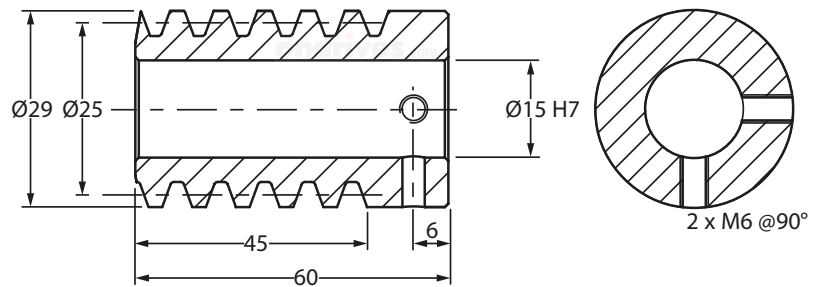
2.0 Module Plastic Worms α 20° PA

Quality Grade Worm 7e25 DIN 3974/3967



Z1 worm profile

PW Bore Worm

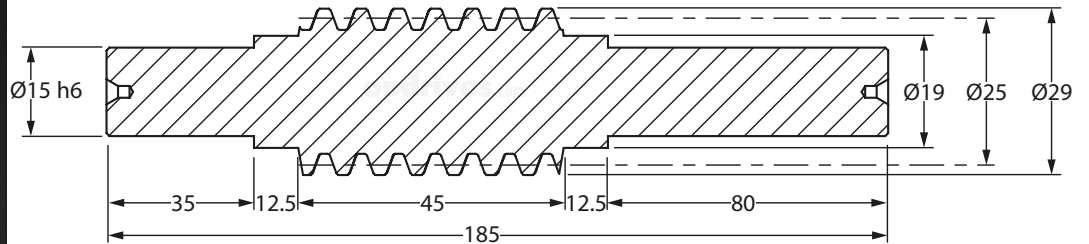


Delrin POM		PEEK GF30°	
Part Number Bore Worm	No. of Starts Z_1	Part Number Bore Worm	No. of Starts Z_1
PW2.0-1DL	1	PW2.0-1PK	1
PW2.0-2DL	2	PW2.0-2PK	2
PW2.0-3DL	3	PW2.0-3PK	3
PW2.0-4DL	4	PW2.0-4PK	4



Z1 worm profile

PSW Shaft Worm



Delrin POM		PEEK GF30°	
Part Number Shaft Worm	No. of Starts Z_1	Part Number Shaft Worm	No. of Starts Z_1
PSW2.0-1DL	1	PSW2.0-1PK	1
PSW2.0-2DL	2	PSW2.0-2PK	2
PSW2.0-3DL	3	PSW2.0-3PK	3
PSW2.0-4DL	4	PSW2.0-4PK	4

PW
PSW
2.5m_x

PRECISION GEARS

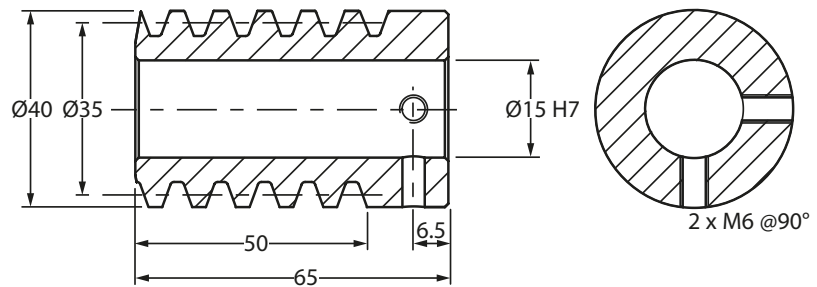
2.5 Module Worms α 20° PA

Quality Grade Worm 6e25 DIN 3974/3967



Z1 worm profile

PW Bore Worm

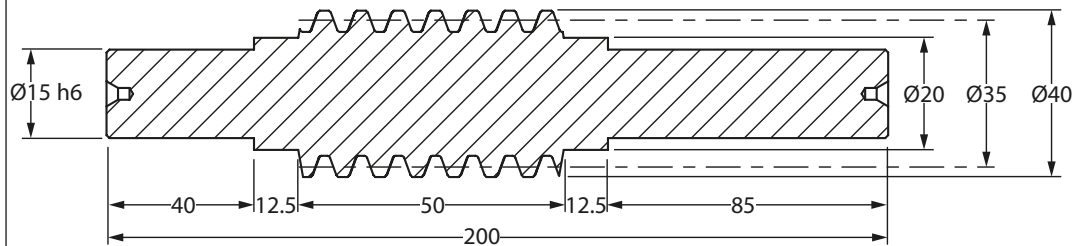


817M40T Steel		303 Stainless Steel	
Part Number Bore Worm	No. of Starts Z_1	Part Number Bore Worm	No. of Starts Z_1
PW2.5-1	1	PW2.5-1S	1
PW2.5-2	2	PW2.5-2S	2
PW2.5-3	3	PW2.5-3S	3
PW2.5-4	4	PW2.5-4S	4



Z1 worm profile

PSW Shaft Worm



817M40T Steel		303 Stainless Steel	
Part Number Shaft Worm	No. of Starts Z_1	Part Number Shaft Worm	No. of Starts Z_1
PSW2.5-1	1	PSW2.5-1S	1
PSW2.5-2	2	PSW2.5-2S	2
PSW2.5-3	3	PSW2.5-3S	3
PSW2.5-4	4	PSW2.5-4S	4

PW
PSW
2.5m_x

PRECISION GEARS

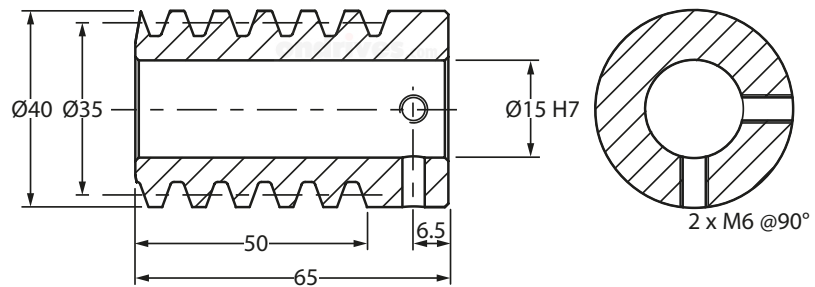
2.5 Module Plastic Worms α 20° PA

Quality Grade Worm 7e25 DIN 3974/3967



Z1 worm profile

PW Bore Worm

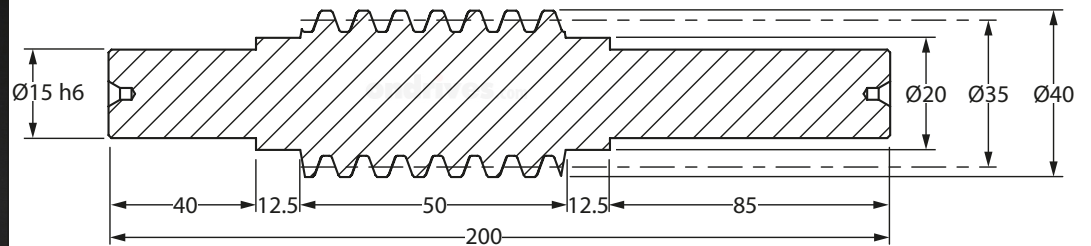


Delrin POM		PEEK GF30°	
Part Number Bore Worm	No. of Starts Z_1	Part Number Bore Worm	No. of Starts Z_1
PW2.5-1DL	1	PW2.5-1PK	1
PW2.5-2DL	2	PW2.5-2PK	2
PW2.5-3DL	3	PW2.5-3PK	3
PW2.5-4DL	4	PW2.5-4PK	4



Z1 worm profile

PSW Shaft Worm



Delrin POM		PEEK GF30°	
Part Number Shaft Worm	No. of Starts Z_1	Part Number Shaft Worm	No. of Starts Z_1
PSW2.5-1DL	1	PSW2.5-1PK	1
PSW2.5-2DL	2	PSW2.5-2PK	2
PSW2.5-3DL	3	PSW2.5-3PK	3
PSW2.5-4DL	4	PSW2.5-4PK	4

PW
PSW
3.0m_x

PRECISION GEARS

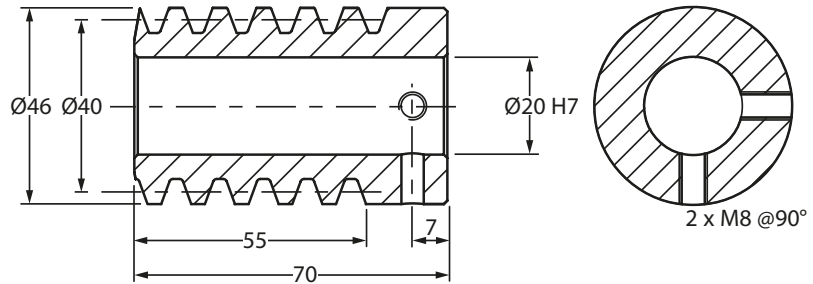
3.0 Module Worms α 20° PA

Quality Grade Worm 6e25 DIN 3974/3967



Z1 worm profile

PW Bore Worm

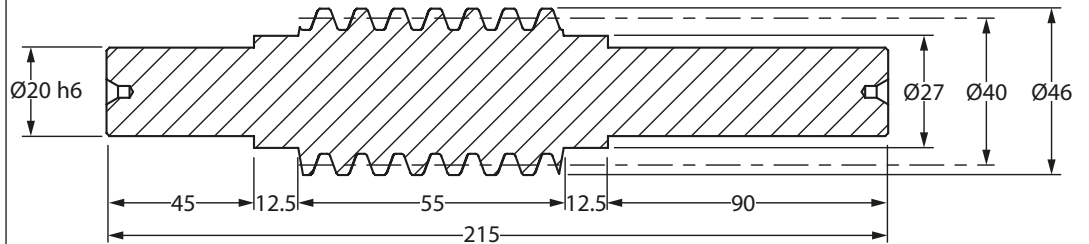


817M40T Steel		303 Stainless Steel	
Part Number Bore Worm	No. of Starts Z_1	Part Number Bore Worm	No. of Starts Z_1
PW3.0-1	1	PW3.0-1S	1
PW3.0-2	2	PW3.0-2S	2
PW3.0-3	3	PW3.0-3S	3
PW3.0-4	4	PW3.0-4S	4



Z1 worm profile

PSW Shaft Worm



817M40T Steel		303 Stainless Steel	
Part Number Shaft Worm	No. of Starts Z_1	Part Number Shaft Worm	No. of Starts Z_1
PSW3.0-1	1	PSW3.0-1S	1
PSW3.0-2	2	PSW3.0-2S	2
PSW3.0-3	3	PSW3.0-3S	3
PSW3.0-4	4	PSW3.0-4S	4

PW
PSW
3.0m_x

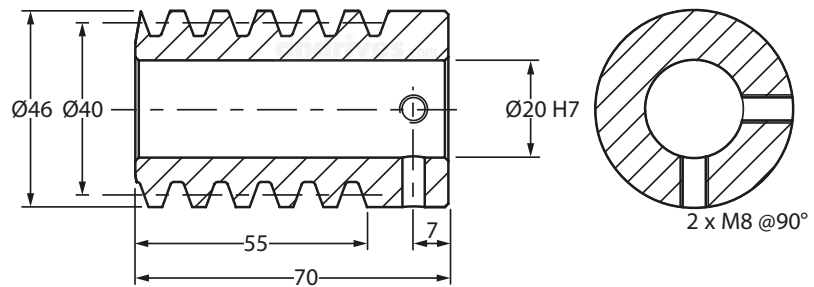
PRECISION GEARS

3.0 Module Plastic Worms α 20° PA

Quality Grade Worm 7e25 DIN 3974/3967



PW Bore Worm

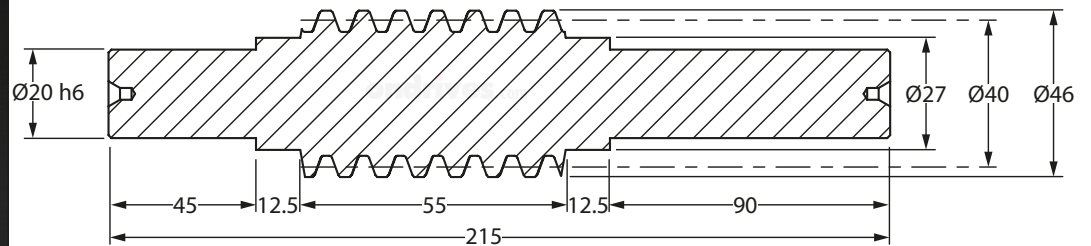


Z1 worm profile

Delrin POM		PEEK GF30°	
Part Number Bore Worm	No. of Starts Z_1	Part Number Bore Worm	No. of Starts Z_1
PW3.0-1DL	1	PW3.0-1PK	1
PW3.0-2DL	2	PW3.0-2PK	2
PW3.0-3DL	3	PW3.0-3PK	3
PW3.0-4DL	4	PW3.0-4PK	4



PSW Shaft Worm



Z1 worm profile

Delrin POM		PEEK GF30°	
Part Number Shaft Worm	No. of Starts Z_1	Part Number Shaft Worm	No. of Starts Z_1
PSW3.0-1DL	1	PSW3.0-1PK	1
PSW3.0-2DL	2	PSW3.0-2PK	2
PSW3.0-3DL	3	PSW3.0-3PK	3
PSW3.0-4DL	4	PSW3.0-4PK	4